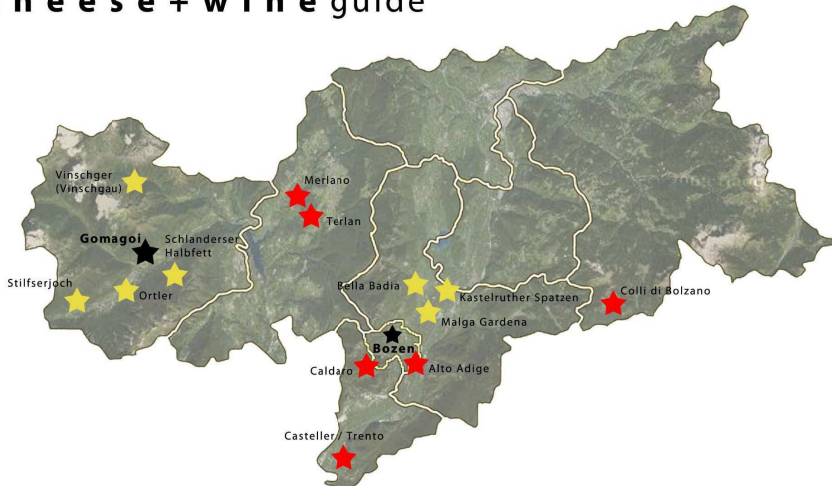


cheese + wine guide



wine regions distances from Gomagoi

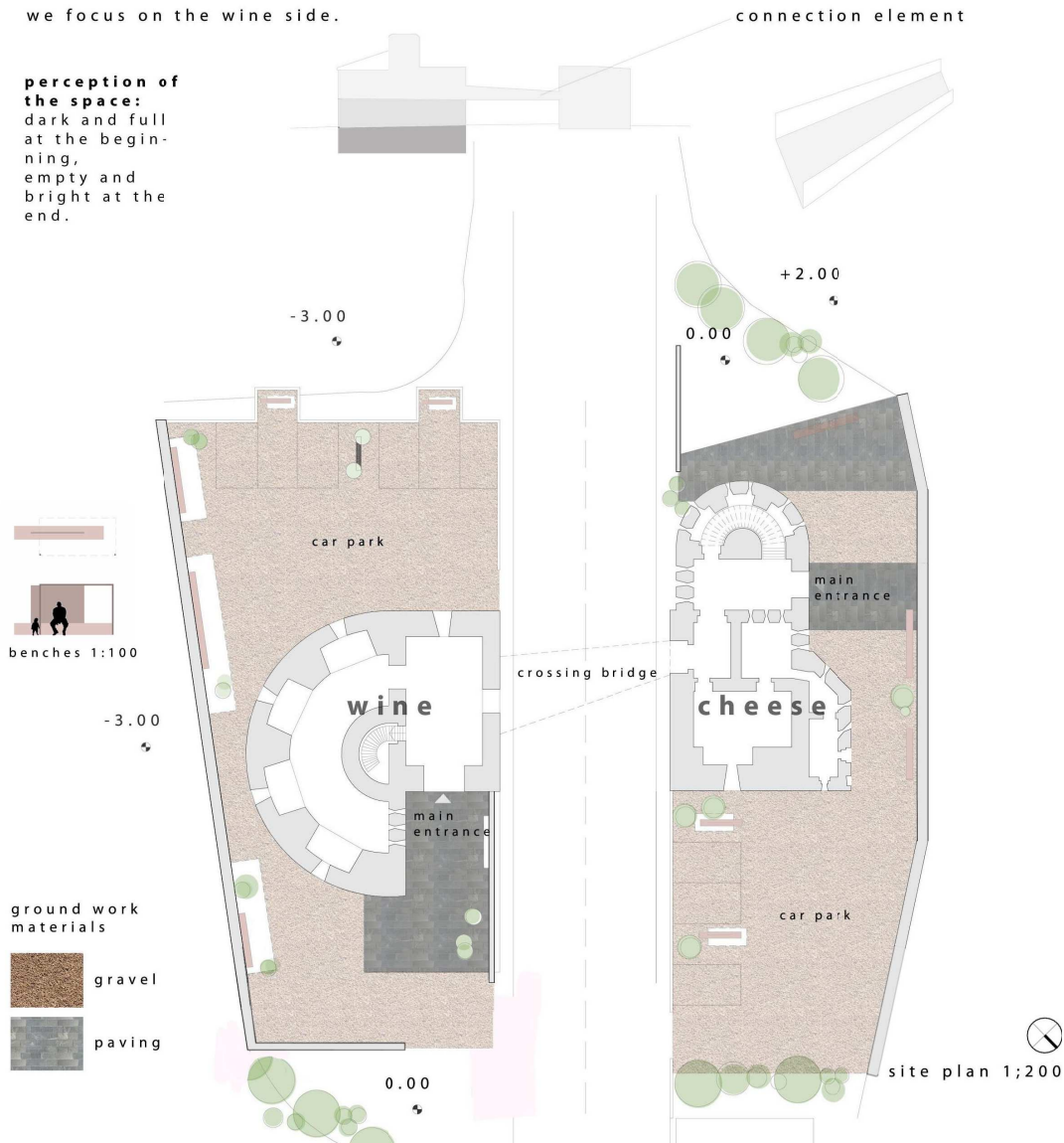
- | | | | |
|-----------------------------|----------------------------------|-----------------------|------------------------|
| 1. Alto Adige 86.5km | 3. Casteller 137km | 5. Merano 56km | 7. Trento 137km |
| 2. Caldarò 88.1km | 4. Colli di Bolzano 226km | 6. Terlan 57km | |

cheese distances from Gomagoi

- | | | |
|------------------------------|--------------------------------------|--------------------------------------|
| 1. Ortler Käse 12.2km | 3. Schlanderser Halbfett 22km | 5. Kastelruther Spatzen 118km |
| 2. Vinschgau 8.8km | 4. Bella Badia 179km | 6. Maiga Gardena 125km |

we focus on the wine side.

perception of the space:
dark and full at the beginning,
empty and bright at the end.



Our proposal is to convert the Gomagoi fortress into a small winery and dairy, selling products from the South Tyrol region.

The building would be used as both a shop and storage space, where visitors can taste and purchase products, view exhibitions of old cheese- and wine-making machinery and local history.

The fortress would become a new meeting point for the residents and visitors of Gomagoi, and a local advertising point for South Tyrolean produce.

In this presentation we have chosen to develop one half of the fortress: the "wine side".

PRECEDENTS



a meeting point



a wine advertisement



a dark space



a good connection with the landscape

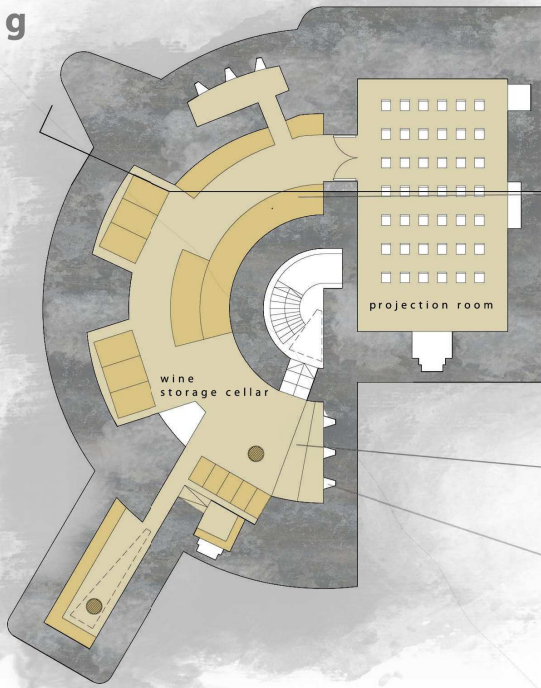


landscape views

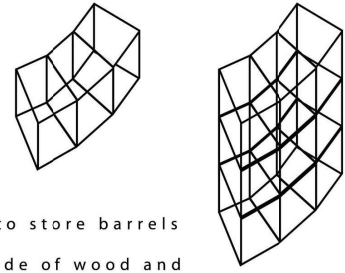
wein + käse festung

valentina torelli + leanne taylor // 141.805 // bauen im denkmal

kg



basement 1:100
store + projection room

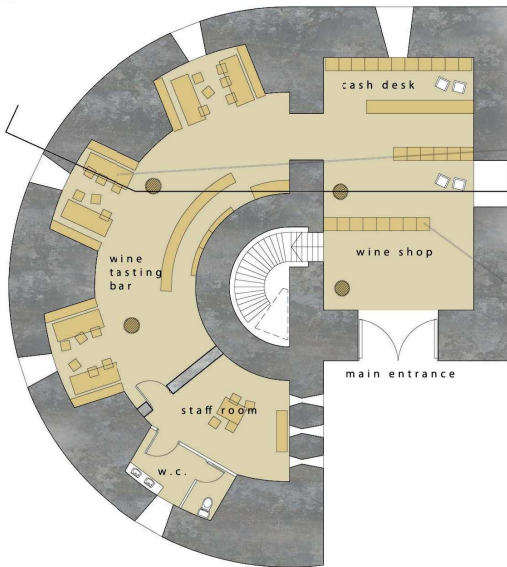


structure to store barrels
display made of wood and glass



shelf to store bottles

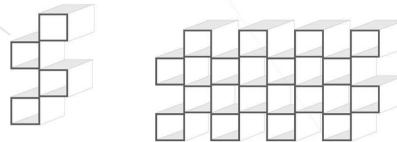
eg



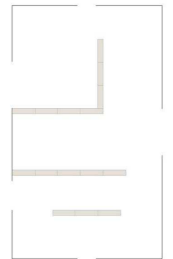
ground floor 1:100
wine shop + wine bar



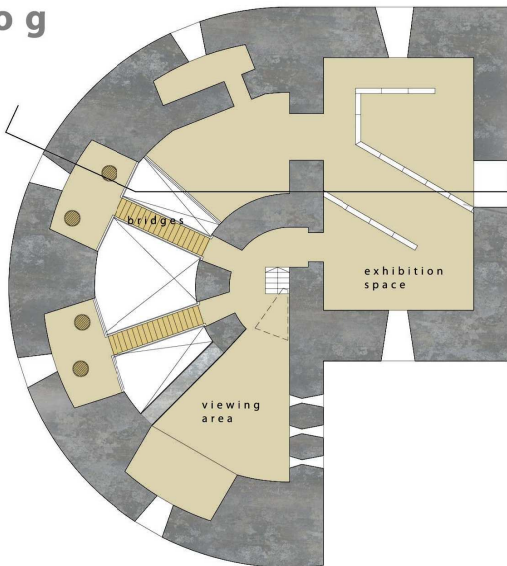
table and chairs
(metal and wood)



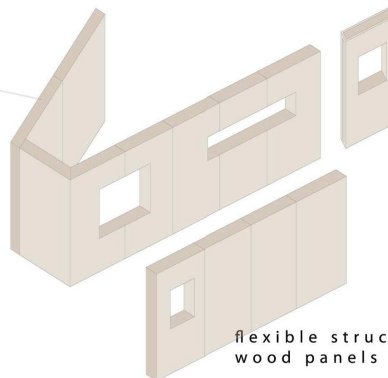
shop shells (metal)



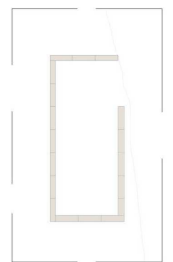
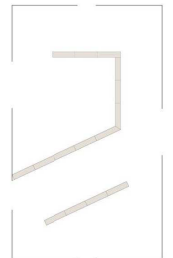
1.og

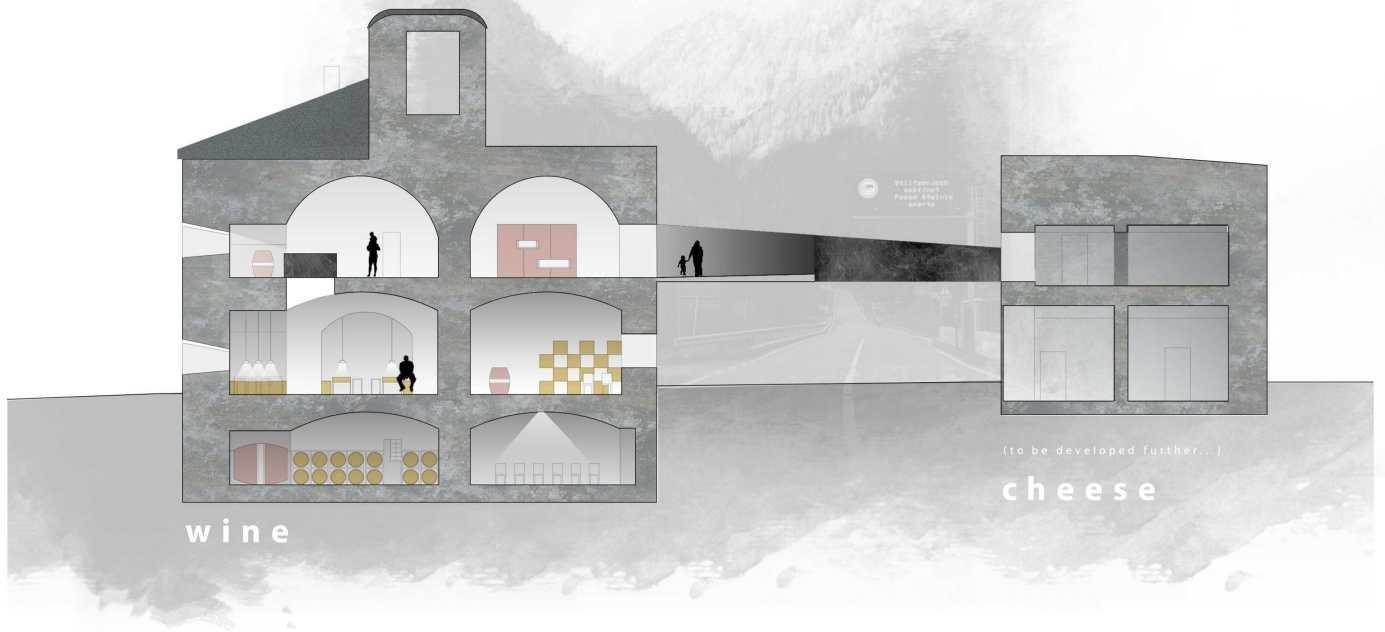


first floor 1:100
point of view + exhibition space



flexible structure, made of
wood panels

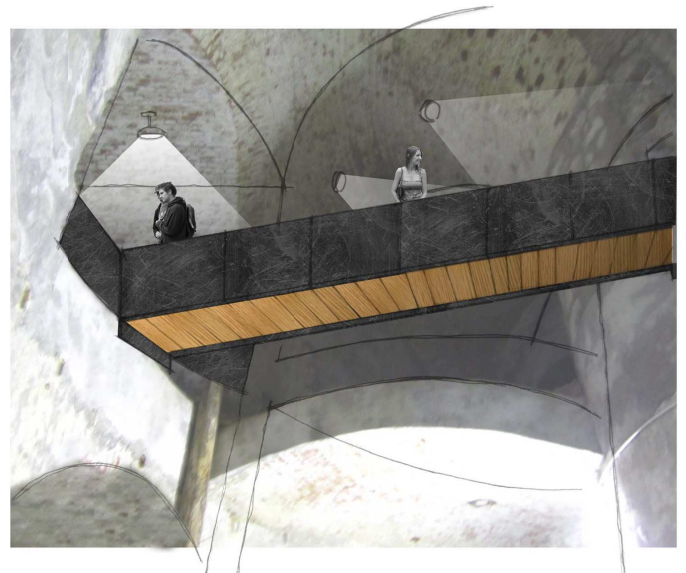




longitudinal section 1:100



view across exterior bridge



view of interior bridge to alcove